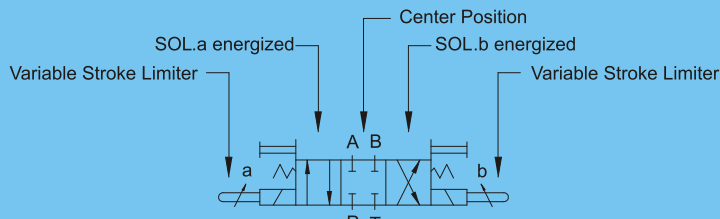


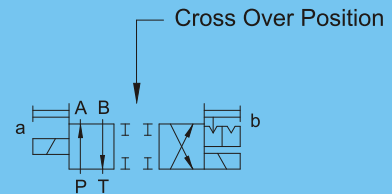
(DSG-3C2-01/03-RW)



(2B2A)
"A" in Center Position.
SOL.a energized

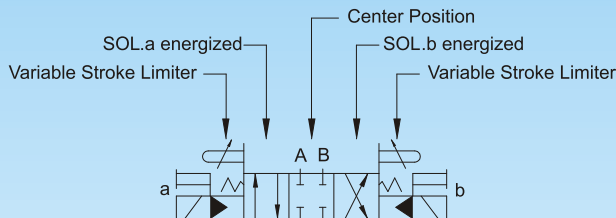
(2B2B)
"B" in Center Position.
SOL.b energized

(DSG-2D2-01/03)



Detented Type
Double Solenoid
2 Position

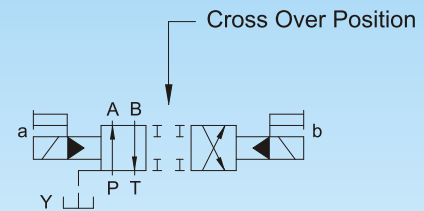
(DSHG-3C2-04/06/10-RW)



(2B2A)
"A" in Center Position.
SOL.a energized

(2B2B)
"B" in Center Position.
SOL.b energized

(DSHG-2N2-04/06/10)



No-Spring Type
Double Solenoid
2 Position

a.	SOL.a energized side
b.	SOL.b energized side
A.	Cylinder Port "A"
B.	Cylinder Port "B"
P.	Pressure Port "P"
T.	Tank Port "T"
≡	Manual Override
⊞	Closed Line
⊞	Open Line
∧	Spring
↑	Connection Lines

⊞	Detented
a	Single Acting Solenoid
⊞	P → A,B T → Connections
⊞	A → T,P B → Connections
◀	Oil Pressure
≠	Variable Stroke Limiter
•	Connecting Point Of Lines And Passages
Y ⊞	Drain Line
⊞	Cross Over Position-All Ports Closed
⊞	Cross Over Position-All Ports Open